



## **Anti-Laminin, Chicken-polyclonal Antibody**

**Catalog No.** PY-10138

**Quantity:** 100 $\mu$ g

**Applications tested:** ELISA, IHC

**Antigen species:** Human

**Reactivity:** Human, mouse, rat

**Host species:** Chicken

**Form:** Antigen affinity purified antibody

### **Target description**

Laminin is a glycoprotein complex consisting of 3 glycosylated polypeptide chains. It forms an extracellular matrix of thin filaments, which present in all basal laminas surrounding muscle, nerve, fat and decidua cells and separate epithelial and endothelial cells from abutting connective tissues. Laminin has been found to be involved in cellular activities such as adhesion, spreading, differentiation, polarization, proliferation, locomotion, tissue invasion and chemotactic responses.

### **Antigen**

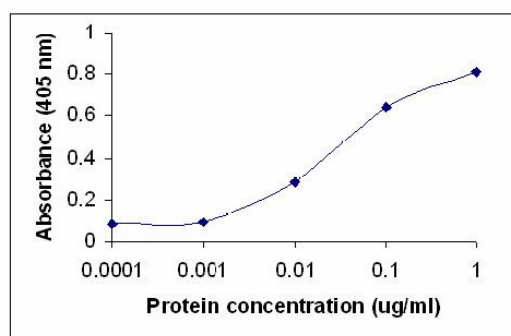
This polyclonal antibody was raised by immunizing chicken with laminin native protein.

### **Application**

ELISA, Western blotting, tissue or cell immunostaining. Recommended starting dilution for Western blot analysis is 1:500, for tissue or cell staining is 1:200. IgY concentration for ELISA is 0.5-1g/ml. Optimal working dilutions must be determined by the end user.

### **Related Products**

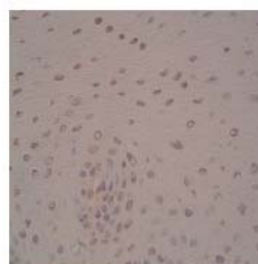
1. Anti-Histone H1, pAb (PY-10140).
2. Anti-SOX5 isoform human, pAb (PY-10272).



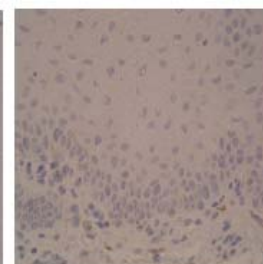
### **ELISA Standard Curve:**

Direct ELISA, Native protein as test antigen. Affinity-Purified anti-Laminin IgY as primary antibody (0.1g/ml), and Goat anti-IgY-HRP as 2nd antibody.

### **AEC Method Tissue Staining:**



Oral epithelium,  
Laminin (1:150)



Oral epithelium  
, negative control

### **Storage**

It is supplied as antigen affinity purified antibody in lyophilized powder. Redissolve the powder with 100 microliter sterile water will restore to the original concentration 1mg/ml (1xPBS). Store at 4°C for short-term application. For long-term storage, aliquot and store at -20°C.

**FOR RESEARCH USE ONLY AND NOT INTENDED FOR DIAGNOSTIC OR THERAPEUTIC USE**